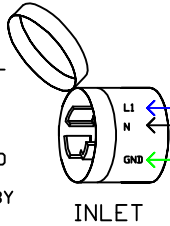


30A/120VAC SHORE POWER
60HZ

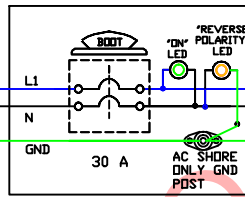
IF INLET IS USED ON A STEEL OR ALUMINUM HULL, AND IS A METAL MOUNTING BASE INLET, BE SURE TO CUT OUT THE STANDARD BUILT IN TIE BETWEEN THE GROUND PIN AND THE METALIC CASE, SO THAT THE HULL IS NOT GROUNDED BY THE SHORE GROUND BEFORE THE ISOLATION TRANSFORMER.



INLET

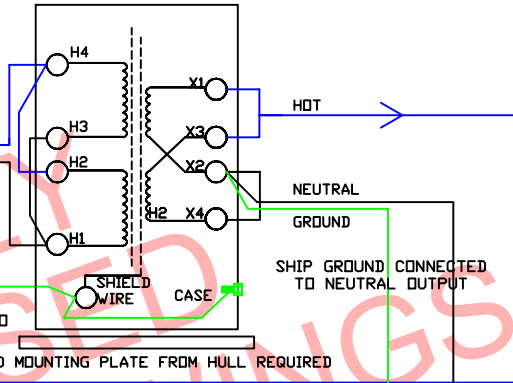
#10-3 SHEATHED CABLE

WATER TIGHT PLASTIC JUNCTION BOX WITHIN 10' OF INLET, ACCESSABLE, WATERPROOF BOOT OVER BREAKER

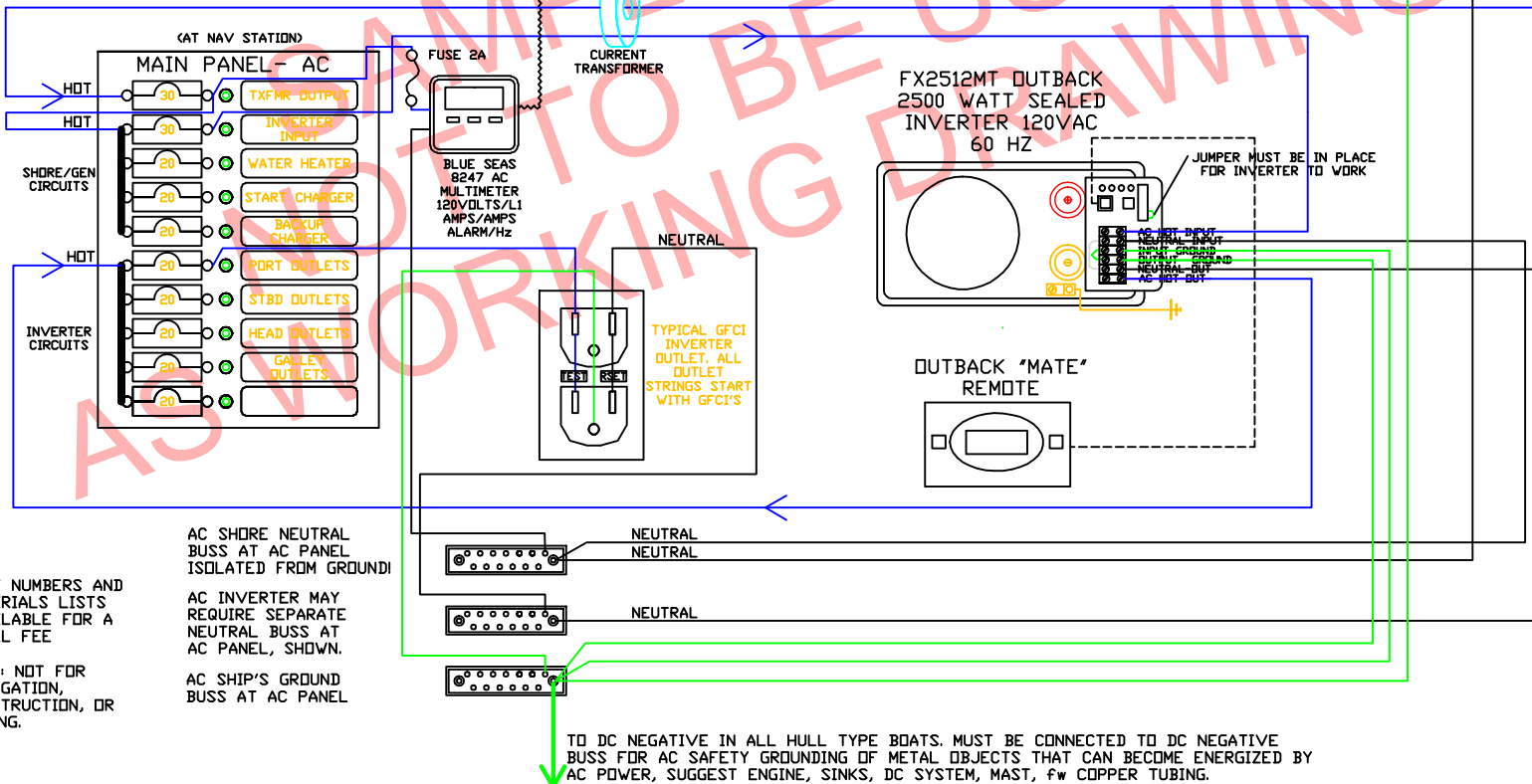


SHORE GROUND TO CASE AND SHIELD - DO NOT CONNECT TO HULL

ISOLATION/POLARITY TRANSFORMER, 120/240 VAC INPUT, 120/240 VAC OUTPUT. SHOWN 120VAC IN, 120VAC OUT



INSULATED MOUNTING PLATE FROM HULL REQUIRED



AC SHORE NEUTRAL BUSS AT AC PANEL ISOLATED FROM GROUND!

AC INVERTER MAY REQUIRE SEPARATE NEUTRAL BUSS AT AC PANEL, SHOWN.

AC SHIP'S GROUND BUSS AT AC PANEL

PART NUMBERS AND MATERIALS LISTS AVAILABLE FOR A SMALL FEE

NOTE: NOT FOR NAVIGATION, CONSTRUCTION, OR EATING.

TO DC NEGATIVE IN ALL HULL TYPE BOATS. MUST BE CONNECTED TO DC NEGATIVE BUSS FOR AC SAFETY GROUNDING OF METAL OBJECTS THAT CAN BECOME ENERGIZED BY AC POWER, SUGGEST ENGINE, SINKS, DC SYSTEM, MAST, FW COPPER TUBING.

SCALE NONE	BOAT NEW BOAT TYPICAL 40 FOOT SAILBOAT	TITLE AC SYSTEM TYPICAL 40 FOOT SAILBOAT, FREE DRAWING	OCEAN CURRENTS MARINE ELECTRIC, INC. 206-604-8117	DWG NO. 000	REV. 01	DATE 8-24-06
---------------	--	--	--	----------------	------------	-----------------